

The Curse of Being Special: From Winston Churchill and FDR to Donald Trump and Brexit

In a recent article in the New York Times, journalist Frank Bruni writes about the "curse of being special." He argues that leaders who believe they are uniquely gifted, and therefore above the rules that apply to others, are often doomed to failure.



The Churchill Complex: The Curse of Being Special, from Winston and FDR to Trump and Brexit by Ian Buruma

★★★★☆ 4.4 out of 5

Language	: English
File size	: 1625 KB
Text-to-Speech	: Enabled
Screen Reader	: Supported
Enhanced typesetting	: Enabled
X-Ray	: Enabled
Word Wise	: Enabled
Print length	: 320 pages



Bruni cites the examples of Winston Churchill, Franklin D. Roosevelt, Donald Trump, and Brexit as leaders who have been cursed by their own sense of exceptionalism.

Churchill, Bruni writes, was a brilliant orator and strategist, but he was also arrogant and reckless. He led Britain to victory in World War II, but he also presided over the decline of the British Empire.

FDR, Bruni writes, was a charismatic leader who helped to lift the United States out of the Great Depression. But he was also a ruthless politician who expanded the power of the presidency and laid the groundwork for the Vietnam War.

Trump, Bruni writes, is a narcissistic demagogue who has divided the United States and damaged its standing in the world.

Brexit, Bruni writes, was a self-inflicted wound that has left the United Kingdom weaker and more isolated.

Bruni concludes by arguing that the curse of being special is "a dangerous delusion that can lead to disastrous consequences."

The curse of being special is not a new phenomenon. In fact, it has been around for as long as there have been leaders. But in today's world, it seems to be more prevalent than ever before.

There are a number of factors that contribute to the curse of being special. One is the rise of social media, which has given leaders a platform to promote their own greatness.

Another factor is the decline of traditional institutions, such as the church and the media, which used to provide a check on the power of leaders.

Finally, there is the growing cult of celebrity, which has created a climate in which it is more acceptable than ever before for leaders to behave like rock stars.

The curse of being special can have a number of negative consequences. First, it can lead to hubris, or an exaggerated sense of one's own importance. This can lead to reckless decision-making and a lack of accountability.

Second, it can lead to a lack of empathy for others. Leaders who believe they are special often see themselves as above the concerns of ordinary people.

Third, it can lead to a loss of perspective. Leaders who believe they are special often lose sight of the big picture and become obsessed with their own personal agendas.

The curse of being special is a serious problem that can have disastrous consequences. Leaders who believe they are above the rules often end up destroying themselves and their countries.

It is important to remember that no one is special. We are all human beings with the same strengths and weaknesses. We should treat each other with respect and humility, and we should hold our leaders accountable to the same standards that we hold ourselves.



The Churchill Complex: The Curse of Being Special, from Winston and FDR to Trump and Brexit by Ian Buruma

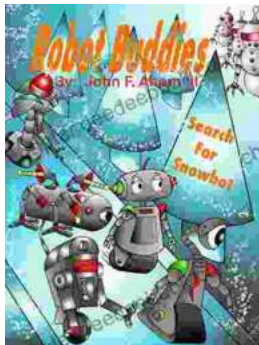
★ ★ ★ ★ ☆ 4.4 out of 5

Language : English
File size : 1625 KB
Text-to-Speech : Enabled
Screen Reader : Supported
Enhanced typesetting : Enabled
X-Ray : Enabled
Word Wise : Enabled

Print length : 320 pages

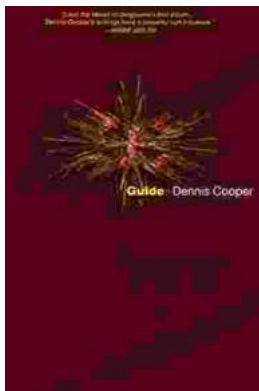
FREE

DOWNLOAD E-BOOK



Robot Buddies: Search For Snowbot

In the realm of innovation and camaraderie, where technology meets friendship, two extraordinary robot buddies, Bolt and Byte, embark on an...



Guide George Miles Cycle Dennis Cooper: An Extraordinary Ride Through the Longest War

In the annals of military history, there are few individuals whose service has been as extraordinary as that of Guide George Miles ...