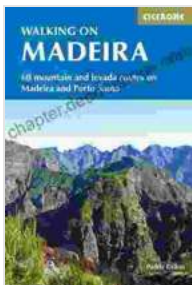


# 60 Mountain And Levada Routes On Madeira And Porto Santo International Walking

Madeira and Porto Santo are two beautiful islands located in the Atlantic Ocean, just off the coast of Portugal. They are known for their stunning scenery, which includes lush forests, rugged mountains, and sparkling blue waters. The islands are also home to a network of levadas, which are irrigation channels that were built centuries ago to transport water from the north of the islands to the south. These levadas now provide walkers with a unique way to explore the islands' natural beauty.

We offer 60 different levada and mountain routes on Madeira and Porto Santo, ranging from easy and leisurely walks to challenging and demanding hikes. Our walks are designed to suit all levels of fitness and experience, and we can provide guided walks or self-guided walking holidays.



## Walking on Madeira: 60 mountain and levada routes on Madeira and Porto Santo (International Walking)

by Paddy Dillon

★★★★☆ 4.5 out of 5

Language : English

File size : 21417 KB

Text-to-Speech : Enabled

Screen Reader : Supported

Enhanced typesetting : Enabled

Word Wise : Enabled

Print length : 523 pages

Paperback : 46 pages

Item Weight : 3.52 ounces

Dimensions : 5 x 0.11 x 8 inches



## Easy and leisurely walks

Our easy and leisurely walks are perfect for those who want to enjoy the beauty of Madeira and Porto Santo without having to tackle any challenging terrain. These walks are typically short and flat, and they offer stunning views of the islands' scenery. Some of our most popular easy and leisurely walks include:

- The Levada do Caldeirão Verde walk: This walk takes you through the Caldeirão Verde, a stunning crater lake located in the north of Madeira. The walk is relatively easy, and it offers beautiful views of the lake and the surrounding mountains.
- The Levada do Rei walk: This walk follows the Levada do Rei, an irrigation channel that was built in the 16th century. The walk is mostly flat, and it offers beautiful views of the surrounding countryside.
- The Ponta de São Lourenço walk: This walk takes you to the easternmost point of Madeira. The walk is relatively easy, and it offers stunning views of the Atlantic Ocean and the surrounding cliffs.

## Challenging and demanding hikes

Our challenging and demanding hikes are perfect for those who are looking for a more challenging walking experience. These hikes are typically longer and more strenuous than our easy and leisurely walks, and they often involve climbing steep hills and traversing rough terrain. Some of our most popular challenging and demanding hikes include:

- The Pico Ruivo hike: This hike takes you to the summit of Pico Ruivo, the highest mountain in Madeira. The hike is challenging, but it offers stunning views of the island from the summit.
- The Vereda do Areeiro walk: This walk takes you along the Vereda do Areeiro, a narrow path that winds its way through the mountains of Madeira. The walk is challenging, but it offers beautiful views of the surrounding scenery.
- The Levada das 25 Fontes walk: This walk takes you through the Levada das 25 Fontes, a beautiful irrigation channel that is located in the north of Madeira. The walk is challenging, but it offers stunning views of the surrounding waterfalls and forests.

## **Guided walks or self-guided walking holidays**

We offer both guided walks and self-guided walking holidays. Our guided walks are led by experienced local guides who will share their knowledge of the islands and their history. Our self-guided walking holidays allow you to explore the islands at your own pace and on your own terms.

## **Book your walking holiday today**

If you are looking for a walking holiday in Madeira or Porto Santo, we encourage you to book your trip today. We offer a wide range of walks to suit all levels of fitness and experience, and we can provide guided walks or self-guided walking holidays. To book your trip, please visit our website or contact us by phone or email.

## **Image gallery**





The Levada do Rei walk follows an irrigation channel that was built in the 16th century.







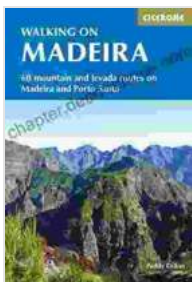
The Pico Ruivo hike takes you to the summit of the highest mountain in Madeira.







The Levada das 25 Fontes walk takes you through a beautiful irrigation channel that is located in the north of Madeira.



## Walking on Madeira: 60 mountain and levada routes on Madeira and Porto Santo (International Walking)

by Paddy Dillon

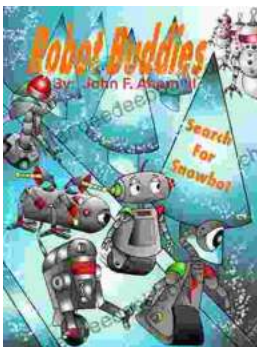
★★★★☆ 4.5 out of 5

Language : English  
File size : 21417 KB  
Text-to-Speech : Enabled  
Screen Reader : Supported  
Enhanced typesetting : Enabled  
Word Wise : Enabled  
Print length : 523 pages

Paperback : 46 pages  
Item Weight : 3.52 ounces  
Dimensions : 5 x 0.11 x 8 inches

FREE

DOWNLOAD E-BOOK



## Robot Buddies: Search For Snowbot

In the realm of innovation and camaraderie, where technology meets friendship, two extraordinary robot buddies, Bolt and Byte, embark on an...



## Guide George Miles Cycle Dennis Cooper: An Extraordinary Ride Through the Longest War

In the annals of military history, there are few individuals whose service has been as extraordinary as that of Guide George Miles ...